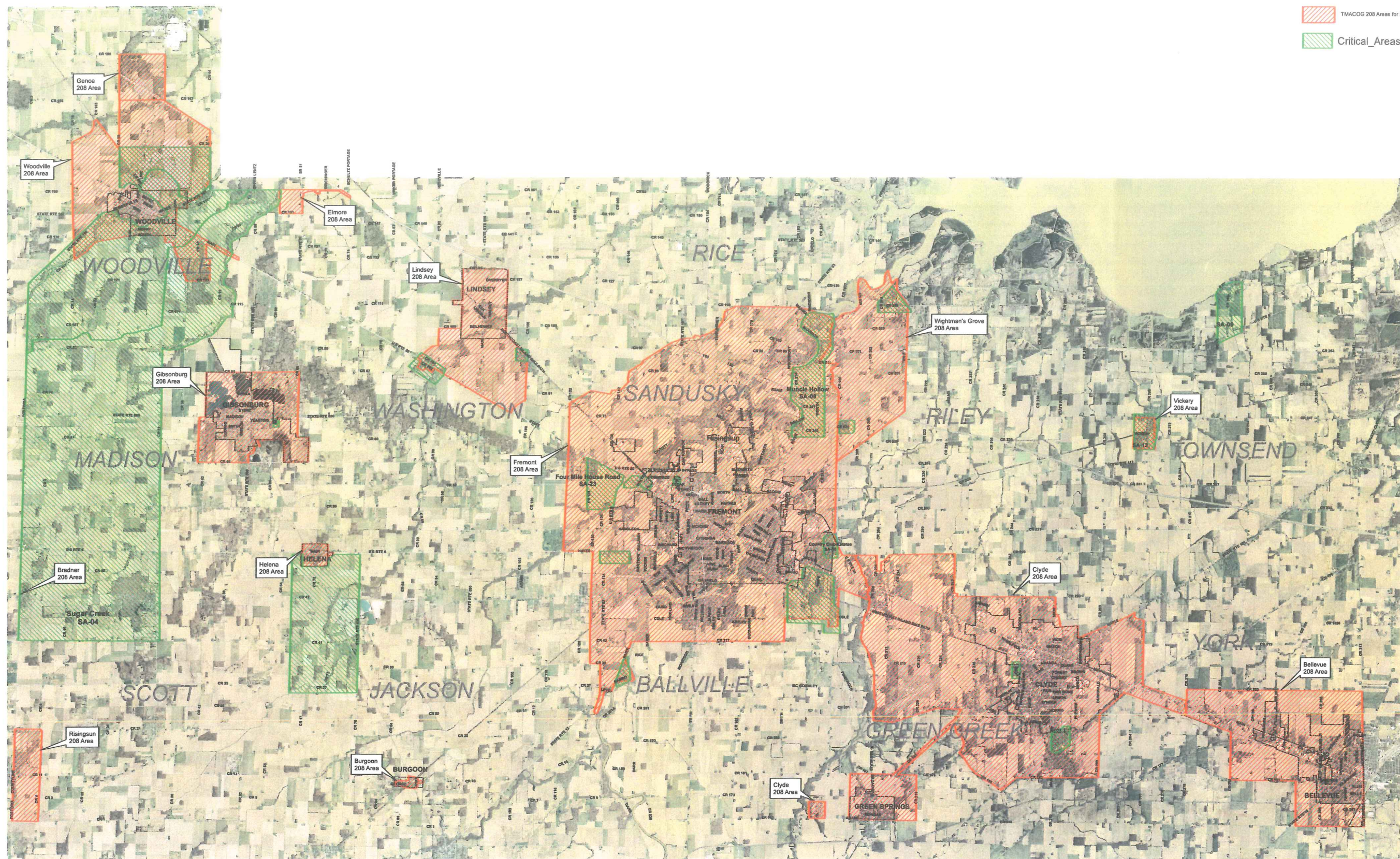


APPENDIX

END NOTES

1. *Sandusky County Comprehensive Plan Update 2013*
2. *White Star Park Water and Wastewater Preliminary Engineering Report 2013*
3. *Rodriquez Street Sanitary Sewer Preliminary Engineering Report 2013*
4. *Wightman's Grove Wastewater Collection and Treatment General Plan 2010*
5. *Ohio EPA's Division of Surface Water and Drinking Water*
6. *Comprehensive Water and Sanitary Sewer General Plan 1997*

 TMACOG 208 Areas for Sandusky County
 Critical_Areas



0 1.25 2.5 5 Miles



R. HEYMAN
 2/6/2014
 PDG JOB# 3185-039
 FILE: S:\3185-039\PLATE8.MXD

**SANDUSKY COUNTY
 CRITICAL SEWER AREAS**
 PLATE

**SANDUSKY COUNTY
 COMPREHENSIVE WATER & SEWER
 GENERAL PLAN**

